

Spring 2011

April

Conservation Collaboration

Seneca Soil & Water Conservation District

"To assist the public in the conservation and improved use of our natural resources through technology assistance and educa-

IN THIS ISSUE

- Miller Conservation Farm Building
- Seneca Co. Pheasants Forever Donation
- Soil Savings Program
- Recipe Corner
- "Down on the Farm" Puzzle
- Looking for a Haywagon
- Project WILD Workshop
- Young Farmers Tour
- Check us out on Facebook
- Newsletter Quiz
- Stewardship Week
- Thinking about becoming a Board Supervisor
- Join us on the Internet!
- Ditch Maintenance Inspections
- Winter MNM Meeting
- Honey Creek Watershed Breakfast Meeting
- Equipment Rentals

Miller Conservation Farm Building

Miller Conservation Farm, owned by Seneca Soil and Water Conservation District, on TR 138 north of Tiffin, is home to a new 28-foot by 48-foot building. The free-standing shop building has poured concrete floors, brown tin siding, a green tin roof and green trim around the windows. It will be used mainly for storage, but also for a shelter for bird banding and during the annual youth hunts and wheelchair hunts. The building will also be used for educational programs held throughout the year. Ward Construction completed the building this winter and a 6-foot concrete apron at the front of the building will be added in the spring.



Seneca Co. Pheasants Forever Donation

The Seneca SWCD office would like to say thank you to the Seneca County Pheasants Forever Club for their donation of this beautiful framed painting by Claude Monet. Monet's aim was to capture the "beauty of the atmosphere, the impossible" and make it live forever in his pictures. The title of this painting is called "Poplars". This painting makes a great edition to the office. Thank You!

Terry McConnell Excavating



Terry McConnell
 Owner / Operator
 1530 Heyman Road
 Bellevue, Ohio 44811
 Ph: 419-483-6540
 Fax: 419-484-9916

Commercial Sites, Farm Drainage
 Basements & Ponds

CLOUSE CONSTRUCTION CORP.

*Fire Restoration *Concrete Work
 *Wood Frame Buildings *Site Work
 *Butler Steel Buildings *Demolition

www.clouseconstruction.com
 Email: clouse@acctiffin.com

(419) 448-1365

KIRIAN TILING CO INC.

DK Precision Trenchers
Sales & Service

Farm Drainage Installation
 GPS Mapping, Controlling and Layout
 Plow or Trencher
 All Size Jobs
 Trackhoe Service
 Ditch Cleaning

Denny Kirian
 4416 E. Twp. Rd. 130
 Tiffin, Ohio 44883
 Ph: (419) 585-4091 Fax: (419) 585-5004
 dktrrenchers@yahoo.com

GIBBS EQUIPMENT, INC.

SERVING THE PEOPLE WHO CARE FOR THE LAND
 1385 East Main Street
 Bellevue, OH
 Phone: (419) 483-4970
 Toll Free: 866-483-4970
 www.gibbsequipment.com

CASE IH, Kinze, ECHO, Land Pride, Bush Hog, Cub Cadet

FB The Legislative Voice of Agriculture

100 Hopewell Ave. (fairgrounds), Tiffin, Ph: 419-447-3091

SENECA COUNTY FARM BUREAU

MEMBER BENEFITS ~

- Nationwide Insurance Discount Programs
- 25% Discount at Sherwin-Williams
- \$1,500 Property Protection Program
- \$500 Savings on select Dodge vehicles
- Hotel Savings Program on nine chains

And many more

Have Gullies? Soil Savings Program

If you live within the Sandusky River – Tiffin watershed which includes: Rock Creek, Morrison Creek, Willow Creek, Bells Run, Sugar Creek and Spicer Creek you are eligible to participate in the “Making Sense Out of Soil \$aving\$” Grant program funded by the Great Lakes Basin Program for Soil Erosion and Sediment Control . This program offers incentives based on the tons of soil being saved from washing down our creeks, streams, river, bays and on out into Lake Erie. Soil savings are paid at a rate of \$10.00 per ton, which is equivalent to purchasing 1 ton of topsoil.

Practices that are eligible for this program include:

Conservation Cropping Practices – Changes in your cropping rotation, tillage, and/or residue management to increase soil savings can additionally assist with reducing compaction and improving soil tilth all of which lead to increased yields.

Winter Cover Crop Plantings – Winter Cover Crops are known to reduce the potential of soil erosion over the winter but are also helpful in increasing infiltration, reducing runoff, reducing compaction, and improving soil tilth.

Tile Main Repairs/Replacement – Four (4) demonstrations of the worst cases for soil lost are being sought to reduce tile main washouts causing tons of soil to be lost with direct connections to our waterways. Repairs are to be followed with a Cover Crop to stabilize the area. (\$10,200 maximum payment restriction)

Streambank Stabilization – Eroding stream banks contribute some of the highest amounts of soil loss to our waters and cause property damage/loss from cutting banks. (\$10,200 maximum payment restriction)

Redline Waterways – This allows for the repair of waterways no longer eligible for USDA funding for upgrades or repairs. Payments for this practice are based on the infiltration rate of the primary soil type, incentive rates are as follows: High Infiltration - \$9.00/ton, Moderate Infiltration - \$10.00/ton, Slow Infiltration - \$11.00/ton and Very Slow Infiltration - \$12.00/ton.

For more details on the program, contact Kendall Stucky at the Seneca SWCD office.


ALLEN EXCAVATING, INC.



DEMOLITION * EXCAVATING * GRADING
 DITCH CLEANING * TRUCKING
 DUMP TRUCK * PONDS * BASEMENTS
 PARKING LOTS * LAND CLEARING

7155 E. Co. Rd. 6 David W. Allen, Pres
 Bloomville, OH 44818 (419) 983-2132

ANNUAL MEETING



Thursday, November 17
Vanguard – Sentinel School

Watch For More Details
In The Next Newsletter!

RECIPE CORNER

Baked Craft Clay

- | | |
|------------------|-----------------------------|
| 4 Cups Flour | 1 Cup Salt |
| 1 1/2 Cups Water | 2 Tablespoons Vegetable Oil |
| Food Coloring | 1 Egg Beaten |



Mix together and knead until smooth. Separate into parts and add a few drops of different colors of food coloring. Make shapes and brush egg over the top. Put shapes on a cookie sheet and bake in the oven at 300F degrees for about one hour until the clay is golden. Seal with shellac to make shiny. Paint them for fun!

Goopy Goop

- | | | |
|---------------|-------------------|---------------|
| 1/2 Cup Water | 2 Cups Cornstarch | Food Coloring |
|---------------|-------------------|---------------|

In a large bowl, mix together water and cornstarch until smooth. Add food coloring and stir. Play with goop on a plastic covered surface or on newspaper.

“Down on the Farm” Puzzle

O	T	F	F	W	W	E	L	L	S	T	A	H
W	P	A	G	A	J	P	A	S	T	U	R	E
X	Q	E	E	T	R	G	I	P	C	R	G	W
H	S	K	N	H	R	M	N	H	O	K	O	M
Y	V	E	R	A	W	Y	E	E	W	E	D	E
L	M	Y	P	R	V	S	X	R	H	Y	S	R
S	R	K	F	O	E	R	P	Q	W	R	E	N
M	N	V	Q	T	C	R	E	Y	O	T	S	T
D	U	C	W	C	N	B	A	H	S	H	R	T
I	A	L	D	A	E	H	A	O	T	O	K	L
T	I	Q	G	R	F	T	O	R	U	A	K	L
K	S	I	B	T	Q	R	K	G	N	M	E	N
C	H	E	S	U	O	H	H	L	V	O	U	W

- | | | | |
|------|-------|---------|-------------|
| BARN | FENCE | PASTURE | TURKEY |
| CAT | HAY | PIG | WEATHERVANE |
| COW | HEN | ROOSTER | WELL |
| DOG | HORSE | TRACTOR | WHEAT |

Find the listed words in the diagram.

They run in all directions - forward, backward, up, down and diagonally.

A & D Excavating, LLC

“For All Your Excavating “Needs”

Sewer Systems
Basements
Driveways
Brush Cleaning

Sewer Taps
Ponds
Water Ways
Demolition

Adam Faeth
419-595-2777

Cell Phone
419-934-2220

Len Kirian Ditching

Drainage Specialist

5356 West County Road 6
New Riegel, Ohio 44853

(419) 595-2205

Bower Tiling Service, Inc.

WE DO THE COMPLETE JOB
OVER 100 YEARS OF SERVICE

Jack Bower
1912 W. McPherson
Clyde, Ohio 43410

Fax: (419) 547-9746
Cell: (419) 656-3000
Ph: (419) 547-9413

bowertiling@aol.com

Boes Brothers Excavating

Randy Boes
Ph: 419-436-9854
raboos@thewavz.com

waterways, wetlands, ponds,
ditch maintenance, brush clearing,
fence row removal, septic systems

PINEVIEW SALES RF FARM DRAINAGE

Specialized Equipment for
Soil Conservation
&
High Residue Farming Needs

Aerway-Phoenix Rolling Harrow
Aerway SSD-Manure Manager

Bob Featheringill
16540 E. Twp. Rd. 104
Attica, Ohio 44807
(419) 426-7385

NACD Stewardship Week

The Seneca SWCD encourages you to think about your personal responsibility to be a good steward of natural resources during its annual Stewardship Week celebration. The National Association of Conservation Districts (NACD) has proclaimed April 24 – May 1, 2011 as Stewardship Week, marking the 56th year of the national event. The 2011 Stewardship Week is themed “Forests For Trees provide us with shade, wood products, fuel, as well as help clean the air we breathe.

“Understanding the importance of forests in our daily lives is the key connection of the 2011 NACD Stewardship theme,” says NACD President Gene Schmidt. “Forests play a critical role in providing clean water, healthy wildlife habitat, as well as jobs for our citizens and products that we use every day.”

For information about Stewardship Week and conservation, contact the SWCD office. Additional information about Stewardship Week is available on the NACD website at www.nacdnet.org.



www.senecaswcd.com

With just a click of the mouse, you can view our newsletter issues, contact any staff member via email, check out our upcoming events, view our programs tab to see our education guide and download scholarship forms, learn more about our Miller Conservation Farm and events, contact our ditch maintenance department, download the photo contest form, check out our advertisers, links to the NRCS and county websites, and much more.....Visit us on the web TODAY!

Thinking About Becoming A Board Supervisor? It's A Great Opportunity!

The Seneca SWCD Annual Meeting is set for Thursday, November 17 at the Sentinel Career Center in Tiffin. During the meeting, the annual election of Board Supervisors will be held.

Concerned citizens in Seneca County can help conserve natural resources by serving on the Seneca Soil and Water Conservation District Board. The mission of Seneca SWCD is “to assist the public in the conservation and improved use of our natural resources through technology assistance and education.”

By being a Supervisor, you acquire several benefits such as representing local resource concerns, being a voice for the citizens of Seneca County, self satisfaction of providing your time to improve the environment, being actively involved with assistance and education programs for citizens, providing leadership in community resource conservation, and development of leadership skills. By serving locally, you also have the greatest impact on conservation of natural resources.

A supervisor must be at least eighteen years of age and be a legal resident of Seneca county. A Supervisor serves a three-year term and can serve an unlimited amount of terms. If you feel that you are interested in being a candidate or know of someone who would be an excellent Board Supervisor, please contact our office.

It's Spring & That Means...Ditch Inspections

The Seneca County Ditch Maintenance Department is currently conducting annual ditch maintenance inspections. Below is a list of responsibilities landowners should follow in order to help keep maintenance costs low and drainage projects working properly. If you are aware of an existing problem on any county maintained project, please contact Tricia Brion at 419-447-7073 between 7 a.m. and 3:30 p.m.

1. Perform the most effective and economical conservation practices on the land within the watershed to reduce the effects of damage or degradation to the project.
2. Prevent the degradation of the whole drainage system including the loss of the grassed filter/berm along the top of open ditches, detention ponds, waterways, and around inlets of all physical structures. Grass Filter/berm widths are established at the time of construction and vary from 3 to 10 feet wide from the top of the bank on an open ditch. Note: Removal or damage to any established drainage system will result in assessment of replacement costs to the landowner upon which damage occurs.
3. Not hinder the flow of water by placing refuse, grass clippings, leaves, brush, timbers etc. or unapproved low water crossings or other obstructions in or around the right-of-way of each project.
4. Obtain approval by the Seneca Ditch Maintenance Department before performing any alterations to the project or doing any work for which the landowner wishes to be reimbursed.
5. Be responsible for any private fences, bridges, and low water crossings. These are considered a benefit to the individual landowner and not to the project as a whole; therefore any cost associated with these will not be reimbursed from the ditch maintenance fund.
6. Prevent the planting of agricultural crops, trees, shrubs, and gardens or the placement of any structures [such as out buildings, sheds, farm implements, fences, firewood, manure and dirt piles, burn and scrap piles, etc.] within the projects maintenance right-of-way [25 feet from the top of the bank] that may hinder access to the maintenance operation. Note: Access to most ditch projects is hindered due to the aforementioned. Please keep your access areas open and clear of all objects.
7. Allow the maintenance staff and equipment access to the project [possibly by farm lane or driveway] to perform the necessary maintenance work.



This Ford pickup truck & trailer are used by the ditch maintenance staff to do spring ditch inspections. You may see them out & about.

Note: If you lease or rent your farm or property to others make certain they are aware of these guidelines. It is the property owner's responsibility to insure that no activity is permitted which would hinder the structural integrity of the drainage system project.

Winter Nutrient Management Meeting

Tom Begg and Chris Berry from Dow AgroSciences spoke at the Winter Manure Update Meeting on March 10, 2011. Dow representatives talked about their product called Instinct which can be used in liquid manure and UAN to help stabilize Nitrogen. The Seneca Soil and Water District would also like to thank Hord Livestock, Farmers Citizens Bank, Farmer Boy Ag and Dow AgroSciences for helping sponsor the meeting.



Over 50 producers attended the meeting. Other speakers included Glen Arnold, OSU extension, reviewing over 5 years of research data on manure applied to wheat and corn,. Ed Lentz, OSU Extension, gave an update on weed management and wheat management. Kendall Stucky, Manure Nutrient Management Specialist, spoke on manure management and the changes to the Pollution Abatement Rules and Standards.

Honey Creek Watershed Farmers' Breakfast

Over 45 people attended the two Honey Creek Watershed meetings held on March 21 & April 4 at Shell Shuckers in Tiffin. At the March meeting, cooperators were given an update on the Honey Creek Grant, discussed techniques and benefits of high yield wheat management strategies by Steve Dennis of S&D Application, talked about products to boost yield and improve soil health by Brian Miller of Helena Chemical Co, and explained concepts and benefits of stream banding phosphorus and nitrogen by Dave Moroschan.

During the April meeting, information was given on stratified soil testing, Tony Donaho from Specialty Fertilizer Products spoke about products to make N&P more efficient, Bill McKibben, a private consultant, reviewed soil test levels and plant tissue levels and how to fix deficiencies, and wrapped up with discussion on Nitrogen Inhibitors and Humic Acid.



Seneca Soil & Water Conservation District

3140 S. SR 100, Suite D
Tiffin, OH 44883
Phone: 419-447-7073
Fax: 419-447-0430
Office Hours: Mon-Fri, 8am-4:30pm
www.senecaswcd.com

Presorted, Standard
U.S. Postage
PAID
Tiffin, OH
44883
Bulk permit #153

Please notify us at 419-447-7073 of any address changes and/or corrections.

Conserving Seneca County's Natural Resources

Regular monthly SWCD Board meetings will be held on the second Tuesday of each month at 7 P.M. in the large conference room at 3140 S. St. Rt. 100, Tiffin. The public is invited to attend.

The Natural Resources Conservation Service provides leadership in a partnership effort to help people conserve, maintain, and improve our natural resources and environment. An Equal Opportunity Provider and Employer.

Seneca SWCD Equipment Rentals and Items To Rent/Sell

15' John Deere No-Till Drill.....\$12 / acre	Flags..... (green/orange/pink/red)
10' Great Plains Drill.....\$10 / acre	\$10.00 / 100 flags
Tree Planter.....\$50 / use	\$7.00 / 50 flags
or per 1000 trees (whichever is greater)	\$5.00 / 25 flags
Netting.....\$0.20 / ft.	Dibble Bars..... \$45.00 to Purchase
Stapler.....\$20 / use	or Rent (\$40 refund upon return)
Crimper.....No charge	County Soil Survey Books... .No Charge
	Digital Soil Survey CD format.....\$3.00

All farm machinery rentals carry a \$50 minimum usage charge. There is an additional charge of \$50 for equipment rental for non-Seneca County landowners. Seneca County landowners have first priority when renting Seneca SWCD equipment. The required rental agreement can be downloaded from our website at www.senecaswcd.com. Call the office at 419-447-7073 to schedule usage for any of the above items.

Email Edition of Newsletter

Would you like to help Seneca SWCD save resources and money? Sign up to receive an email newsletter instead of a paper copy. Please email us your name, address, and email address to dmizen@senecaswcd.com. We will email the next Newsletter to you which will also be in **color**! Thanks for helping us conserve!

SWCD & NRCS STAFF

<i>Tia Rice</i>	<i>Program Administrator</i>
<i>Dawn Mizen</i>	<i>Financial/System Coordinator</i>
<i>Lynn Eberhard</i>	<i>Technician</i>
<i>Beth Diesch</i>	<i>Technician/ Education Specialist</i>
<i>Bret Margraf</i>	<i>Nutrient Management Technician</i>
<i>Tricia Brion</i>	<i>Ditch Maintenance</i>
<i>Jason Kirgis</i>	<i>Ditch Maintenance</i>
<i>Kendall Stucky</i>	<i>MNM Specialist</i>
<i>Mary Ann Hawk</i>	<i>District Conservationist</i>
<i>Nate Weber</i>	<i>Soil Conservationist</i>
<i>Cory Hohman</i>	<i>Engineering Technician</i>
<i>Melissa Hanner</i>	<i>Resource Soil Scientist</i>

Board of Supervisors

<i>Ed Brickner</i>	<i>Chairman</i>
<i>Art Feck</i>	<i>Vice Chairman</i>
<i>David Lucius</i>	<i>Treasurer</i>
<i>Chris Schimpf</i>	<i>Secretary</i>
<i>Joe Steyer</i>	<i>Member</i>

Conservation Educator

Spring 2011

Visit us online—www.senecaswcd.com

Seneca Soil & Water Conservation District

Never too Late for Arbor Day

This will be the 4th year that the Seneca Soil & Water office provides all county 5th graders with a tree sapling to celebrate Arbor Day. Arbor Day is Friday, April 29th, plan to spend some time celebrating this annual holiday. Below is a list of books that are available at your local library. Other fun activities include beating a leaf or doing a bark rubbing. These activities and more can be found at www.arborday.org.

Great Books to Use for Arbor Day

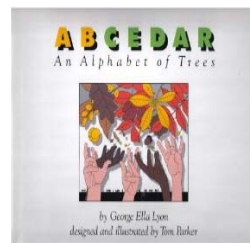
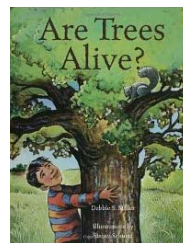
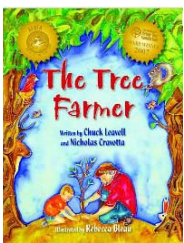
The Tree Farmer, written by Chuck Leavell and illustrated by Rebecca Bleau

Where Once there was a Wood written and illustrated by Denise Fleming

The Grandpa Tree written by Mike Donahue, illustrated by Susan Dorsey

Are Trees Alive? written by Debbie S Miller, illustrated by Stacey Schuett

A B Cedar: An Alphabet of Trees written and illustrated by George Ella Lyon



Last year the Tiffin Tree Commission hosted their Arbor Day celebration at St Joe. All students helped plant 2 trees near the school garden and received a sapling from the Seneca SWCD.

For more info on our education programs and visits contact:

Beth Diesch
Education Specialist
419.447.7073

bdiesch@senecaswcd.com

Upcoming Dates:

- April 17th—Seneca County Earth Day Celebration at Hedges Boyer Park 1:30-4:30p
- April 22nd—Earth Day
- April 29th—Arbor Day
- June 22 & 23 - EARTH workshop for teachers, hosted at Seneca East.

“Take 5” - Go Outside

Use the idea to enhance your kids’ thinking skills, strengthen their bond with nature and get some fresh air all in 5 min!

Grab a net and a bucket and investigate a vernal pool!! These seasonal, wet depressions can be found in most any county woods. They are the breeding grounds for amphibians and have tons of activity in the spring.

- Turn over rocks and logs around the edge of the vernal pool, looking carefully for the black & blue spotted Jefferson salamander.
- Frog & toad eggs can be seen as a slimy string of black polka dots. Salamander eggs are more like globs of slime with larger black polka dots in distinct individual eggs.
- Can’t find any salamanders? Build a house and they might come...use bark, branches, mosses, leaves and stones piled in a wet area to provide a dark and moist shelter & protection.

“Up in the Clouds”—EARTH Teacher’s Workshop

Black Swamp Raptors will be the keynote speaker at the 15th annual E.A.R.T.H. Workshop on June 22 & 23 at Seneca East School. They will be bringing live birds and also doing a break out session on Birds in the Classroom. Some of the other sessions include Explosive Chemistry, Amazing Agriculture, Classroom GPS and Science Literature. Field trips will be canoeing, alternative farms, Ballreich’s Observatory, Crystal Traditions and more. Registration is \$55 from now until May 20th, then \$65 until June 7th. Ashland University is offering 1 graduate credit (\$182) and 15 contact hours may be available from your LPDC. For a complete brochure & session descriptions check out www.senecaswcd.com or call the office. Any formal or non-formal educator is welcome to attend!



Highlight on the Lending Library—Safari in a Box

Thanks to a generous donation from the SABLES organization anyone in the county can borrow the Safari in a Box trunk. This trunk has resources for teaching about Ohio's wildlife & animal classifications. There are hands-on activities, sample furs and skulls, as well as replica scat and tracks. This trunk also is great for adaptations, habitats, ecosystems, food webs, biodiversity, and more life science concepts! Feel free to use this for creative writing, art projects, dramatic play, graphing

or measuring. Historical and social studies connections are bountiful, too.

This trunk is part of the lending library and can be reserved for 2 week intervals by emailing Beth. There is still availability for this spring!

Components in trunk:

- Furs and skulls from various mammals
- Scat from mammals and amphibians
- Track replicas from birds & mammals
- Field guides & CD's of Ohio's most popular wildlife
- Lots of lesson ideas to "open & teach"

Visit a Vernal Pool this Spring

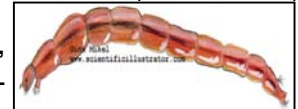
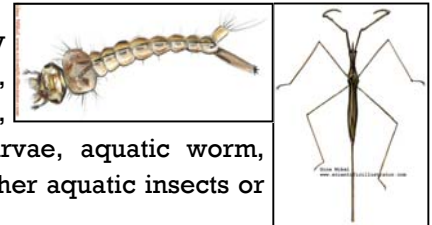
Vernal pools, sometimes referred to as nature's nursery, will be full of life as you receive this newsletter. If you've never visited one, there is no reason to wait, if you do they will dry up and you'll have to wait till next spring. Located in a low lying (depression) that is filled with seasonal snow melt & rain, a vernal pool, or two, can be found almost every woodland in Seneca County.

Due to the seasonality of this habitat, predators are not as prominent as in other bodies of water. Salamanders, toads and frogs take advantage of this and lay their eggs in the still water. Depending on specie and water temperature, hatching can occur between 14-28 days. The juvenile amphibian stays in the pool until metamorphosis is complete, usually right as the pool is drying up for late summer & autumn.

Other animals commonly found in our area's vernal

pools include fairy shrimp, crayfish, scavenger beetles, midges, mosquito larvae, aquatic worm, daphnia and many other aquatic insects or their larva.

If you are visiting a vernal pool, water proof boots are a necessity. Nets, collection containers and magnifying lens are optional. Animals that are captured should always be released in the same location on the same day. For more info check out www.ovpp.org.



From top to bottom:
Mosquito Larvae,
Water Scorpion,
Midge Larvae, Fairy
Shrimp, Scavenger
Beetle Larvae

Natural 'education' Resources

- <http://www.realtrees4kids.org/index.htm>—The National Christmas Tree Association has provided this information all about tree farming & divided it by grade level.

- http://www.dnr.state.oh.us/website/ocm_gis/mapviewer_app/ - This interactive map allows you to view tons of info about Lake Erie, shipping ports and routes, elevations, lighthouses, reef locations, recreation sites, and more!

Where we've been...

- The preschoolers at Angel Academy learned that **Worms Squirm**. They learned about burrows, castings, composting and the anatomy of a worm. Investigating worms and watching them squirm was definitely the highlight.
- Tiffin Middle School, 8th graders, learned about **Alternative Energy**. By doing an experiment with different sources of sugars, they learned how ethanol is made & how scientist are exploring other types of biomass fuels. They also reviewed the 10 most common sources of energy in the US and learned that in 2008 only 7.4% of the energy in the US came from renewable resources.
- 22 teachers learned about using wildlife activities through the **Project WILD & Aquatic WILD** workshop.

Where we're going...

- New Riegel 8th graders will be learning about **Your Watershed**. They'll see how a watershed is determined and how everyone plays an important part. They'll also see first hand what it's like to live at the lower end of a dirty, polluted watershed.
- Calvert Elementary students will be investigating the soil type(s) in their community garden. They will be determining the texture, percolation rate and composition of the garden's soil. Then analyze how each characteristic is good or bad for plants.
- Old Fort, Seneca East, St. Wendelin, New Riegel, Mohawk and Tiffin Homeschoolers will be visiting the Miller Conservation Farm for **Field Trips** this spring.

Don't see your school listed? Call and set up a visit (419)447-7073 or email: bdiesch@senecaswcd.com